

RGX Series

SCBA Couplings

NFPA 1981



Durability in extreme environments:

Parker's RGX Series couplings are built to withstand the extreme temperature environment that is required of the self contained breathing apparatus (SCBA) widely used in the fire rescue community. Beyond meeting the dimensional and performance specifications set by the National Fire Protection Association (NFPA), these couplings also function in colder temperatures than required by the industry standard. Parker's robust seal design promotes longer service life and provides increased durability.

Made in the USA, RGX Series quick couplings are directly interchangeable with existing couplings manufactured to the NFPA 1981 requirements. Additionally, RGX series' protective caps meet the heat and flame resistance specifications of that standard.



Contact Information:

Parker Hannifin Corporation
Quick Coupling Division
8145 Lewis Road
Minneapolis, MN 55427

Todd Lambert

tlambert@parker.com

phone 763 544 7781

fax 763 544 3418

www.Parker.com/SCBA-Couplings

RGX Series Features:

- Push to connect operation
- Visual connection indicator
- Meets National Fire Protection Association standards
- Interchanges with similar industry standard couplings
- Exceeds industry standards for temperature range
- Lightweight design
- Rugged and durable
- Keyed and colored options

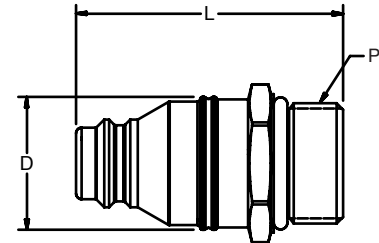
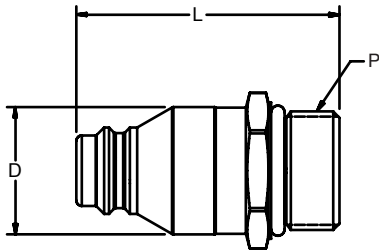
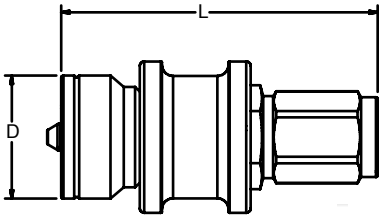


ENGINEERING YOUR SUCCESS.

RGX Series Specifications



| RGX Series Specs | | |
|------------------|-------------------|-----------------|
| Rated Pressure | Temp. Range | Material |
| 5,500 psig | -40° F to +250° F | Stainless Steel |



Couplers

| Coupler Part No. | Port | Diameter | Length | Keyed/Color Options |
|------------------|----------------|----------|--------|---------------------|
| RGX-C-03-BL | 7/16-20 UNF-2B | 1.10" | 2.85" | Black |
| RGX-C-03-BU | 7/16-20 UNF-2B | 1.10" | 2.85" | Blue |
| RGX-C-03-CL | 7/16-20 UNF-2B | 1.15" | 2.85" | Clear |
| RGX-C-03-RD | 7/16-20 UNF-2B | 1.15" | 2.85" | Red |

Nipple

| Nipple Part No. | Port | Diameter | Length |
|-----------------|------------------------------------|----------|--------|
| RGX-N-05 | 7/8-14 UNF-2A | .93" | 1.93" |
| RGX-N-19 | 7/8-14 UNF-2A | .93" | 1.93" |
| RGX-N-22 | 7/8-14 UNF-2A (with protrusion) | .93" | 1.93" |

Nipple

| Nipple Part No. | Port | Diameter | Length |
|-----------------|---------------|----------|--------|
| RGX-N-06 | 7/8-14 UNF-2A | .96" | 1.93" |

Protective Caps

| Cap Part No. | Cap Option | Length |
|--------------|-------------|--------|
| RGX-CAP-07 | Nipple Cap | 8.50" |
| RGX-CAP-02 | Coupler Cap | 5.80" |

